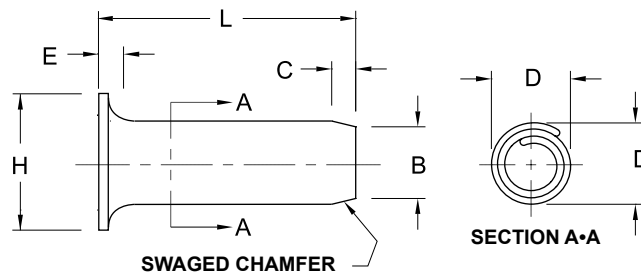




# SERIES 400 HEADED PINS

## Specifications and Technical Data



When a design calls for the head of the pin to be driven down flush, the radius under the head must be given clearance. To provide this clearance, either countersink the hole or enlarge the hole in the component adjacent to the head as shown above by 0.15 mm or .006" over the maximum hole sizes in the specifications.

PIN DUTIES	PIN MATERIAL AND HARDNESS	FINISHES
<b>M</b> Standard	<b>B</b> High Carbon Steel SAE 1070-1095/CS 70 HV 420 TO 545	<b>K</b> Plain, oiled <b>R</b> Phosphate coated <b>T</b> Zinc Plated

### DIMENSIONAL DATA — INCH

NOMINAL PIN SIZE	PIN DIAMETER		HEAD DIMENSIONS			CHAMFER		RECOMMENDED HOLE SIZE		LENGTHS
	D		H		E	B	C			L
	STANDARD DUTY		DIAMETER		THICK- NESS	DIA.	LENGTH			TOLERANCE ± .020
	MAX.	MIN.	MAX.	MIN.	REF.	MAX.	REF.	MAX.	MIN.	
<b>.062</b> 1/16	.072	.067	.099	.084	.016	.059	.028	.065	.062	.187 to .750
<b>.078</b> 5/64	.088	.083	.122	.105	.016	.075	.032	.081	.078	.250 to .875
<b>.094</b> 3/32	.105	.099	.144	.125	.031	.091	.038	.097	.094	.312 to 1.000
<b>.125</b> 1/8	.138	.131	.189	.166	.031	.121	.044	.129	.125	.375 to 1.500
<b>.156</b> 5/32	.171	.163	.234	.207	.047	.152	.048	.160	.156	.437 to 1.750
<b>.187</b> 3/16	.205	.196	.279	.248	.062	.182	.055	.192	.187	.500 to 2.000

### DIMENSIONAL DATA — METRIC

NOMINAL PIN SIZE	PIN DIAMETER		HEAD DIMENSIONS			CHAMFER		RECOMMENDED HOLE SIZE		LENGTHS
	D		H		E	B	C			L
	STANDARD DUTY		DIAMETER		THICK- NESS	DIA.	LENGTH			TOLERANCE ± 0.50
	MAX.	MIN.	MAX.	MIN.	REF.	MAX.	REF.	MAX.	MIN.	
<b>1.5</b>	1.73	1.62	2.4	2	0.4	1.4	0.5	1.6	1.5	5 to 18
<b>2</b>	2.25	2.13	3.1	2.6	0.5	1.9	0.7	2.1	2	6 to 22
<b>2.5</b>	2.78	2.65	3.8	3.2	0.7	2.4	0.7	2.6	2.5	8 to 28
<b>3</b>	3.3	3.15	4.6	3.9	0.8	2.9	0.9	3.1	3	10 to 25
<b>3.5</b>	3.84	3.67	5.2	4.6	0.9	3.4	1	3.62	3.5	10 to 45
<b>4</b>	4.4	4.2	6	5.2	1.2	3.9	1.1	4.12	4	12 to 40
<b>5</b>	5.5	5.25	7.4	6.5	1.5	4.85	1.3	5.12	5	14 to 50

- ⊙ Specifications on other metric and inch diameters and lengths are available on request.
- ⊙ Shear strength is the same as the equivalent size, material and duty coiled pin.



Innovative fastening solutions.  
Lower assembly costs.



**Challenge Us!**

**SPIROL** Application Engineers will review your application needs and work with your design team to recommend the best solution. One way to start the process is to visit our **Optimal Application Engineering** portal at [www.SPIROL.com](http://www.SPIROL.com).

**U.S.A. Spirol International Corporation**  
30 Rock Avenue  
Danielson, Connecticut 06239  
Tel. +1 (1) 860.774.8571  
Fax. +1 (1) 860.774.2048

**Spirol West Inc.**  
1950 Compton Avenue, Unit 111  
Corona, California 92881-6471  
Tel. +1 (1) 951.273.5900  
Fax. +1 (1) 951.273.5907

**Spirol International Corporation Shim Division**  
321 Remington Road  
Stow, Ohio 44224  
Tel. +1 (1) 330.920.3655  
Fax. +1 (1) 330.920.3659

**Spirol Distribution**  
(For Distributor Customers)  
30 Rock Avenue  
Danielson, Connecticut 06239  
Tel. +1 (1) 860.774.8571  
Fax. +1 (1) 860.774.0487

**Canada Spirol Industries, Ltd.**  
3103 St. Etienne Boulevard  
Windsor, Ontario  
Canada N8W 5B1  
Tel. +1 (1) 519.974.3334  
Fax. +1 (1) 519.974.6550

**Mexico Spirol México, S.A. de C.V.**  
Carretera a Laredo KM 16.5 Interior E  
Col. Moisés Saenz  
Apodaca, N.L. 66613 México  
ó Apdo. Postal 151 de Apodaca, N.L.  
Tel. +52 (01) 81 8385 4390  
Fax. +52 (01) 81 8385 4391

**Europe Spirol Industries, Ltd.**  
Princewood Road  
Corby, Northants  
England NN17 4ET  
Tel. +44 (0) 1536 444800  
Fax. +44 (0) 1536 203415  
(UK Distributors: Tel. 0800 3890034)

**Spirol SAS**  
Rue Henri Rol Tanguy  
Z.A. Les Naux  
51450 Bétheny - Reims  
France  
Tel. +33 (0) 3 26 36 31 42  
Fax. +33 (0) 3 26 09 19 76

**Spirol GmbH**  
Briener Strasse 9  
80333 Munich  
Germany  
Tel. +49 (0) 931 454 670 74  
Fax. +49 (0) 931 454 670 75

**Asia Pacific Spirol International Engineered Fastener Trading Co. Ltd.**  
No. 11 Xi Ya Rd. North  
Section A, 1F, Building 14  
Wai Gao Qiao Free Trade Zone  
Shanghai, China 200131  
Tel. +86 (0) 21 5046-1451/1452  
Fax. +86 (0) 21 5046-1540

e-mail: [info@spirol.com](mailto:info@spirol.com)

**[www.SPIROL.com](http://www.SPIROL.com)**